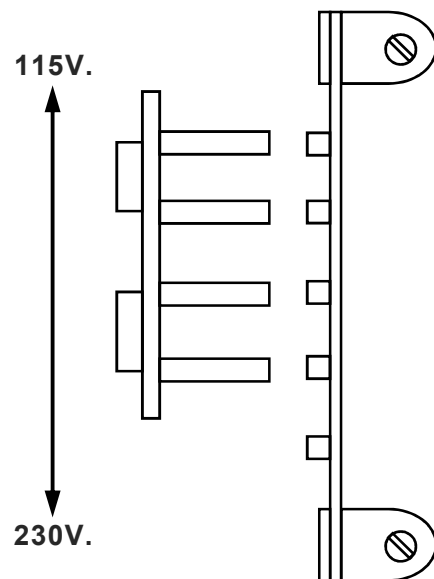


1 15V.-230V. TRANSFORMER ADJUSTMENT



FOR 230 VOLT OPERATION MOVE
MALE ADJUSTMENT PLUG 1 POSITION
IN DIRECTION SHOWN.

CAUTION: BE SURE GAME IS UNPLUGGED
WHEN MOVING ADJUSTMENT
PLUG.

A-10691

PATENTS ISSUED AND PENDING IN
THE FOLLOWING COUNTRIES:

UNITED STATES
BELGIUM
FRANCE
WEST GERMANY
GREAT BRITIAN
ITALY
JAPAN
SPAIN

VERY IMPORTANT

INSERT **ALL** LIGHTBOX PLUGS IN THE PROPER
SOCKETS **BEFORE** PLUGGING IN THE LINE CORD.

DISCONNECT THE LINE CORD BEFORE MAKING
ADJUSTMENTS TO CONTACTS OR UNITS.

A-6235-2

BX LAST BALL RELAY	O BALL RETURN RELAY	AX RESET RELAY	P ADD PLAYER UNIT RELAY	W COIN CHUTE RELAY	K BONUS SCORE RELAY	S START RELAY	C 500 POINT AND ADD BONUS UNIT RELAY	Q GAME OVER RELAY
------------------------------------	-------------------------------------	-----------------------------	---	------------------------------------	-------------------------------------	----------------------------	--	-----------------------------------

Q GAME OVER RELAY	D 3000 POINT & ADD BONUS UNIT RELAY	U 1st BALL RELAY	E 500 POINT RELAY	R HOLD RELAY	F 500 POINT RELAY	TX TILT RELAY
-----------------------------------	---	----------------------------------	-----------------------------------	---------------------------	-----------------------------------	----------------------------

2 COINS 3 PLAYS
RELAY

COIN
CHUTE RELAY

25 VOLT
FUSE
15
AMP.

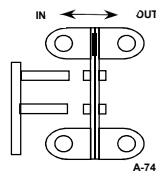
PLAYBOARD
LIGHT FUSE
10
AMP.

LIGHTBOX
LIGHT FUSE
15
AMP.

TOTAL PLAY
METER

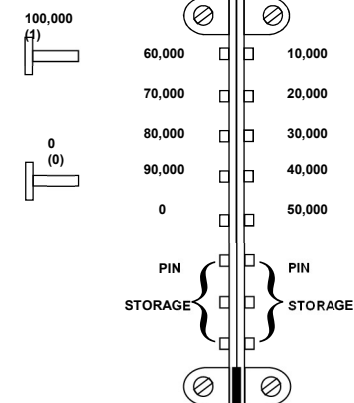
INSIDE SW. –
OPENS REPLAY
BUTTON CIRCUIT.
SECOND SW. – OPENS
CIRCUIT TO ADD
REPLAY UNIT RELAY.

MATCH
FEATURE



A-7490

POINT SCORE ADJUSTMENT

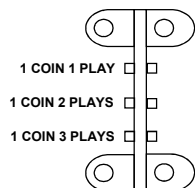


NOTE: PLUG VALUE PLUS SOCKET VALUE EQUALS
POINT SCORE.
DO NOT PUT PLUG "0" IN "0" SOCKET.

398

A-17151

COIN CHUTE ADJUSTMENT



A-17357

H I G H

N O R M A L

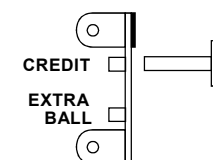
S T A R T

**GOTTLIEB
PART NO.
B-8091**

CONNECT LINE TO 1 & 4.
FOR 115V, TIE 1 TO 2 & 3 TO 4.
FOR 230V, TIE 2 TO.

1 2 3 4

GAME ADJUSTMENT



A-17201